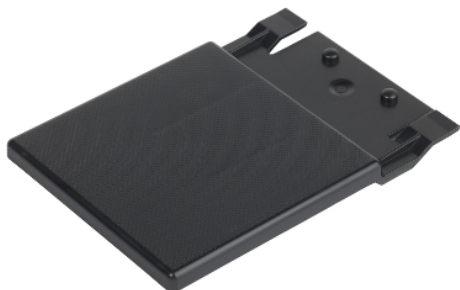




Product availability: Stock - Normally stocked in distribution facility



Main

Range	I-Line
Product or Component Type	Blank plate

Complementary

Parts Quantity	Set of 5
Height	114.30 mm (4.5 in)
Net weight	0.18 lb(US) (0.08 kg)

Ordering and shipping details

Category	00014 - NON-NEG RTA PNLBD PARTS
Discount Schedule	PE1A
GTIN	00785901535355
Package weight(Lbs)	0.41 kg (0.9 lb(US))
Returnability	Yes
Country of origin	US

Offer Sustainability

Sustainable offer status	Green Premium product
California proposition 65	WARNING: This product can expose you to chemicals including: Nickel compounds and Bisphenol A (BPA) which is known to the State of California to cause Carcinogen + Reproductive harm. For more information go to www.p65warnings.ca.gov
REACH Regulation	REACH Declaration
EU RoHS Directive	Not applicable, out of EU RoHS legal scope
Mercury free	Yes
RoHS exemption information	Yes
China RoHS Regulation	China RoHS Declaration
Environmental Disclosure	Product Environmental Profile
Circularity Profile	No need of specific recycling operations

Contractual warranty

Warranty	18 months
----------	-----------

The information provided in this documentation contains general descriptions and/or technical characteristics of the products contained herein. This documentation is not intended as a substitute for and is not to be used for determining suitability or reliability of these products for specific user applications. It is the duty of any such user or integrator to perform the appropriate and complete risk analysis, evaluation and testing of the products with respect to the relevant specific application or use thereof. Neither Schneider Electric Industries SAS nor any of its affiliates or subsidiaries shall be responsible or liable for misuse of the information contained herein.