

Product data sheet

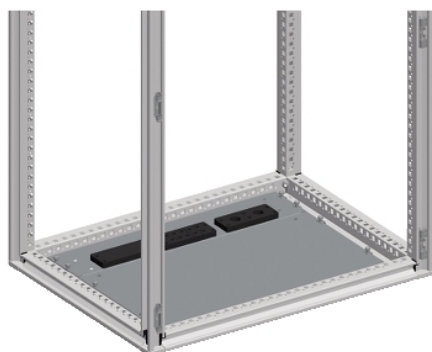
Characteristics

NSYDCE10

Spacial SF cable-gland plate for connectors - 1000 mm enclosure



Local distributor code: 398244837
EAN Code: 3606485130446



Main

Range	Spacial
Product or component type	Cable gland plate for connectors
Accessory / separate part category	Cable management accessory
Device application	Multi-purpose
Range compatibility	Spacial Spacial SF suitable enclosure
Device composition	Fixing elements 1 plate
Quantity per set	Set of 1

Complementary

Accessory / separate part destination	Connector
Mounting support	Cable gland plate
Cable entry	1 or 2 entries
Material	Galvanised steel
Fixing mode	By clips: C-shaped
Height	20 mm
Width	1000 Mm nominal: 844 mm real:
Depth	25 mm
Thickness	1.5 mm

Packing Units

Unit Type of Package 1	PCE
Number of Units in Package 1	1
Package 1 Height	2 cm
Package 1 Width	11.5 cm
Package 1 Length	84.4 cm
Package 1 Weight	830 g

Offer Sustainability

Sustainable offer status	Green Premium product
REACH free of SVHC	Yes
EU RoHS Directive	Pro-active compliance (Product out of EU RoHS legal scope) EU RoHS Declaration
Toxic heavy metal free	Yes
Mercury free	Yes
China RoHS Regulation	China RoHS Declaration

RoHS exemption information	 Yes
Environmental Disclosure	 Product Environmental Profile

Contractual warranty

Warranty	18 months
----------	-----------