

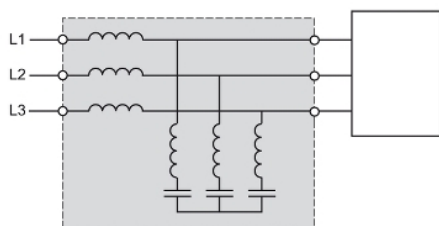
Product data sheet

Characteristics

VW3A4647

passive filter - 72 A - 460 V - for variable speed drive

EAN Code: 3389119204453



Main

Product or component type	Passive filter
Product specific application	Reduction of current harmonics

Complementary

Range compatibility	Altivar 71 Altivar 61
[Us] rated supply voltage	480 V +/- 10 %
Power supply frequency	60 Hz +/- 5 %
Quantity per drive	1 filter per drive for ATV61HD37N4 1 filter per drive for ATV61WD37N4 1 filter per drive for ATV61WD37N4C 1 filter per drive for ATV71HD37N4 1 filter per drive for ATV71WD37N4 1 filter per drive for ATV61HD45N4 1 filter per drive for ATV61WD45N4 1 filter per drive for ATV61WD45N4C 1 filter per drive for ATV71HD45N4 1 filter per drive for ATV71WD45N4
[In] rated current	72 A
Network number of phases	3 phases
THDI	10 % for ATV61WD37N4 ATV61W motor: 37 kW/50 hp 10 % for ATV61WD37N4C ATV61W motor: 37 kW/50 hp 16 % for ATV61HD37N4 ATV61H motor: 37 kW/50 hp 16 % for ATV71HD37N4 ATV71H motor: 37 kW/50 hp 16 % for ATV71WD37N4 ATV71W motor: 37 kW/50 hp 10 % for ATV61WD45N4 ATV61W motor: 45 kW/60 hp 10 % for ATV61WD45N4C ATV61W motor: 45 kW/60 hp 16 % for ATV61HD45N4 ATV61H motor: 45 kW/60 hp 16 % for ATV71HD45N4 ATV71H motor: 45 kW/60 hp 16 % for ATV71WD45N4 ATV71W motor: 45 kW/60 hp
Max current	1.5 x nominal current
Efficiency	98 %
Cos phi	1 (150 % of line current) 0.85 (75 % of line current) 0.99 (100 % of line current)
Electrical connection	Terminal, connection capacity: 50 mm ²
Electrical insulation class	Class F
Net weight	61 kg

Environment

IP degree of protection	IP20
Relative humidity	5...85 % without condensation
Ambient air temperature for operation	40...55 °C (with current derating 3 % per °C) 5...40 °C (without current derating)
Ambient air temperature for storage	-25...55 °C
Operating altitude	<= 1000 m without current derating > 1000...4000 m with current derating 5 % per 1000 m

Packing Units

Unit Type of Package 1	PCE
Number of Units in Package 1	1

Contractual warranty

Warranty	18 months
----------	-----------