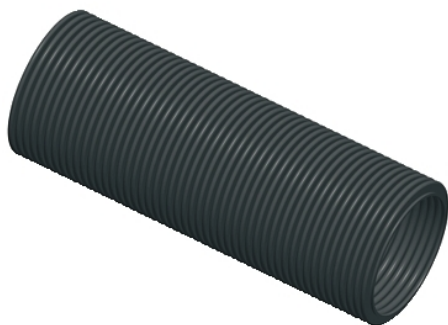


Product data sheet

Characteristics

NSYCPT29

Corrugated cable gland tube - Ø29 mm.
Supply: 25m



Main

Accessory / separate part category	Cable management accessory
Product or component type	Cable gland
Range compatibility	Thalassa Thalassa PLS Thalassa Thalassa PLA Thalassa Thalassa PLM Spacial Spacial SBM Spacial Spacial S3D Spacial Spacial S3CM Spacial Spacial CRN Spacial Spacial SM Spacial Spacial SF
Anwendung	Multi-purpose
Device composition	Corrugated tube
Quantity per set	1 reel

Complementary

Material	Low density polyethylene
Colour	Black
Length	25000 mm
Diameter	29 Mm 34.5 mm

Environment

Environmental characteristic	UV protection
------------------------------	---------------

Packing Units

Unit Type of Package 1	PCE
Number of Units in Package 1	1
Package 1 Height	17.5 cm
Package 1 Width	63.0 cm
Package 1 Length	63.0 cm
Package 1 Weight	3.5 kg

Offer Sustainability

REACH free of SVHC	Yes
EU RoHS Directive	Pro-active compliance (Product out of EU RoHS legal scope) EU RoHS Declaration
Mercury free	Yes
China RoHS Regulation	China RoHS Declaration
RoHS exemption information	Yes

Contractual warranty

Warranty	18 months
----------	-----------