

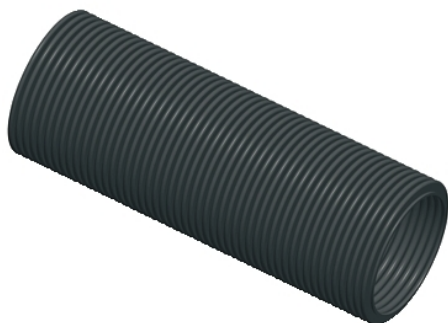
Product data sheet

Characteristics

NSYCPT17

Corrugated cable gland tube - Ø17 mm.

Supply: 25m



Main

| | |
|------------------------------------|---|
| Accessory / separate part category | Cable management accessory |
| Product or component type | Cable gland |
| Range compatibility | Thalassa PLS Thalassa PLA Thalassa PLM Spacial SBM Spacial S3D Spacial S3CM Spacial CRN Spacial SM Spacial SF |
| Application | Multi-purpose |
| Device composition | Corrugated tube |
| Quantity per set | 1 reel |

Complementary

| | |
|----------|-----------------------------|
| Material | Low density polyethylene |
| Colour | Black |
| Length | 25000 mm |
| Diameter | 16.6 Mm 21.2 Mm 17 mm |

Environment

| | |
|------------------------------|---|
| Environmental characteristic | Halogen and heavy materials free UV protection |
|------------------------------|---|

Offer Sustainability

| | |
|----------------------------|--|
| Sustainable offer status | Green Premium product |
| REACH Regulation | REACH Declaration |
| REACH free of SVHC | Yes |
| EU RoHS Directive | Pro-active compliance (Product out of EU RoHS legal scope) EU RoHS Declaration |
| Mercury free | Yes |
| RoHS exemption information | Yes |
| China RoHS Regulation | China RoHS Declaration |
| Environmental Disclosure | Product Environmental Profile |
| Circularity Profile | No need of specific recycling operations |

Contractual warranty

| | |
|----------|-----------|
| Warranty | 18 months |
|----------|-----------|

The information provided in this documentation contains general descriptions and/or technical characteristics of the performance of the products contained herein. This documentation is not intended as a substitute for and is not to be used for determining suitability or reliability of these products for specific user applications. It is the duty of any such user or integrator to perform the appropriate and complete risk analysis, evaluation and testing of the products with respect to the relevant specific application or use thereof. Neither Schneider Electric Industries SAS nor any of its affiliates or subsidiaries shall be responsible or liable for misuse of the information contained herein.