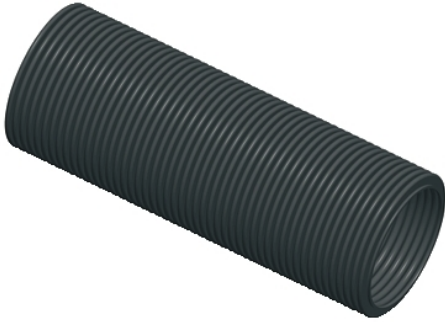


Product data sheet

Characteristics

NSYCPT37

Corrugated cable gland tube - Ø37 mm.
Supply: 25m



Main

Accessory / separate part category	Cable management accessory
Product or component type	Cable gland
Range compatibility	Thalassa PLS Thalassa PLA Thalassa PLM Spacial SBM Spacial S3D Spacial S3CM Spacial CRN Spacial SM Spacial SF
Application	Multi-purpose
Device composition	Corrugated tube
Quantity per set	1 reel

Complementary

Material	Low density polyethylene
Colour	Black
Length	25000 mm
Diameter	37 Mm 36 Mm 42.4 mm

Environment

Environmental characteristic	Halogen and heavy materials free UV protection
------------------------------	---

Offer Sustainability

Sustainable offer status	Green Premium product
REACH Regulation	REACH Declaration
REACH free of SVHC	Yes
EU RoHS Directive	Pro-active compliance (Product out of EU RoHS legal scope) EU RoHS Declaration
Mercury free	Yes
RoHS exemption information	Yes
China RoHS Regulation	China RoHS Declaration
Environmental Disclosure	Product Environmental Profile
Circularity Profile	No need of specific recycling operations

Contractual warranty

Warranty	18 months
----------	-----------

The information provided in this documentation contains general descriptions and/or technical characteristics of the performance of the products contained herein. This documentation is not intended as a substitute for and is not to be used for determining suitability or reliability of these products for specific user applications. It is the duty of any such user or integrator to perform the appropriate and complete risk analysis, evaluation and testing of the products with respect to the relevant specific application or use thereof. Neither Schneider Electric Industries SAS nor any of its affiliates or subsidiaries shall be responsible or liable for misuse of the information contained herein.