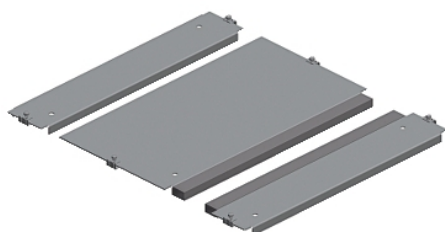


NSYEC361

Spacial SF 1 entry cable gland plate - fixed by clips - 300x600 mm



Main

Range	Spacial
Product or component type	Cable gland plate
Accessory / separate part category	Cable management accessory
Application	Prisma application Multi-purpose
Range compatibility	Spacial SF Prisma PH Spacial SFM
Mounting location	Enclosure bottom
Cable gland type	Standard
Cable entry	1 entry
Device composition	Fixing elements 1 plate Self extinguishing polyurethane adhesive gasket with cross-section of 15 x 25 mm
Quantity per set	Set of 1
Material	Galvanised steel

Complementary

Height	20 mm
Width	300 Mm nominal: 116 Mm useful: 144 mm real:
Depth	600 mm nominal:
Thickness	1.5 mm

Offer Sustainability

Sustainable offer status	Green Premium product
REACH Regulation	REACH Declaration
EU RoHS Directive	Pro-active compliance (Product out of EU RoHS legal scope) EU RoHS Declaration
Mercury free	Yes
RoHS exemption information	Yes
China RoHS Regulation	China RoHS Declaration
Environmental Disclosure	Product Environmental Profile
Circularity Profile	No need of specific recycling operations

Contractual warranty

Warranty	18 months
----------	-----------

The information provided in this documentation contains general descriptions and/or technical characteristics of the performance of the products contained herein. This documentation is not intended as a substitute for and is not to be used for determining suitability or reliability of these products for specific user applications. It is the duty of any such user or integrator to perform the appropriate and complete risk analysis, evaluation and testing of the products with respect to the relevant specific application or use thereof. Neither Schneider Electric Industries SAS nor any of its affiliates or subsidiaries shall be responsible or liable for misuse of the information contained herein.