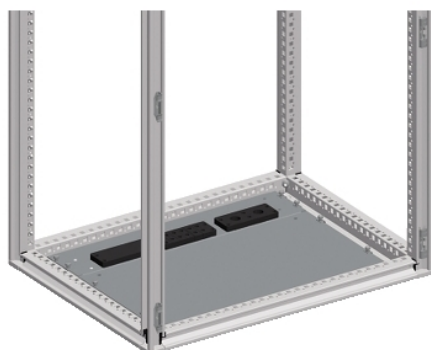


Product data sheet

Characteristics

NSYDCE12

Spacial SF cable-gland plate for connectors - 1200 mm enclosure



Main

Range	Spacial
Product or component type	Cable gland plate for connectors
Accessory / separate part category	Cable management accessory
Device application	Multi-purpose
Range compatibility	Spacial SF suitable enclosure
Device composition	Fixing elements 1 plate
Quantity per set	Set of 1

Complementary

Accessory / separate part destination	Connector
Mounting support	Cable gland plate
Cable entry	1 or 2 entries
Material	Galvanised steel
Fixing mode	By clips: C-shaped
Height	20 mm
Width	1200 mm nominal:
Depth	25 mm
Thickness	1.5 mm

Offer Sustainability

Sustainable offer status	Green Premium product
RECh Regulation	RECh Declaration
RECh free of SVHC	Yes
EU RoHS Directive	Pro-active compliance (Product out of EU RoHS legal scope) EU RoHS Declaration
Toxic heavy metal free	Yes
Mercury free	Yes
RoHS exemption information	Yes
China RoHS Regulation	China RoHS Declaration
Environmental Disclosure	Product Environmental Profile
Circularity Profile	No need of specific recycling operations

Contractual warranty

Warranty	18 months
----------	-----------

The information provided in this documentation contains general descriptions and/or technical characteristics of the performance of the products contained herein. This documentation is not intended as a substitute for and is not to be used for determining suitability or reliability of these products for specific user applications. It is the duty of any such user or integrator to perform the appropriate and complete risk analysis, evaluation and testing of the products with respect to the relevant specific application or use thereof. Neither Schneider Electric Industries SAS nor any of its affiliates or subsidiaries shall be responsible or liable for misuse of the information contained herein.