

Product data sheet

Characteristics

XVEL2B6

BLUE STEADY BEACON INTEGRAL LED

24VAC/DC



Main

Range of product	Harmony XVE Optimum
Product or component type	Complete illuminated beacon
Beacon or indicator bank unit type	1 base unit 1 illuminated unit 1 screw fixing cover 1 short fixing base
Signalling type	Steady
Component name	XVE
Light source	Integral LED, blue
Bulb type	LED
[Us] rated supply voltage	24 V AC/DC

Complementary

Mounting diameter	70 mm
Connections - terminals	Screw clamp terminals, <= 1 x 1.5 mm ² with cable end
Marking	CE
Short-circuit protection	0.63 A
[Ui] rated insulation voltage	250 V conforming to IEC 60947-1
Nominal voltage limit	0.85...1.1 Un conforming to IEC 60947-5-1
Current consumption	< 25 mA
[Uimp] rated impulse withstand voltage	4 kV IEC 60947-1
Luminance	800 cd/m ²
CAD overall width	70 mm
CAD overall height	129 mm
CAD overall depth	70 mm
Terminals description ISO n°1	(GND)GROUND (COM-1)PW
Net weight	0.25 kg

Environment

Standards	EN/IEC 60947-1 EN/IEC 60947-5-1
Product certifications	CCC CSA UL
Ambient air temperature for storage	-40...70 °C
Ambient air temperature for operation	-25...55 °C
Electrical shock protection class	Class I aluminium tube mounting conforming to IEC 61140 Class I plastic tube mounting conforming to IEC 61140
Protective treatment	TC
IP degree of protection	IP40 any position except vertical position conforming to IEC 60529 IP42 vertical position conforming to IEC 60529

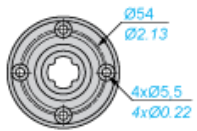
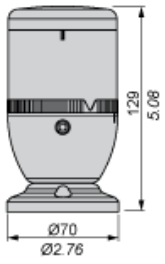
Contractual warranty

Warranty	18 months
----------	-----------

Illuminated Beacon

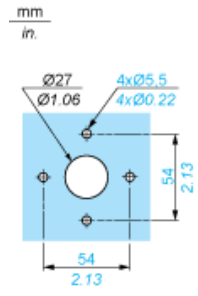
Dimensions

mm
in.



Illuminated Beacon

Panel Cut-out for Mounting Directly on Fixing Base



Illuminated Beacon

Wiring Diagram

