

## Product data sheet

### Characteristics

# ATS48C79Q

soft starter for asynchronous motor - ATS48 -  
675 A - 230..415 V - 220..630 KW



### Main

Range of product	Altistart 48
Product or component type	Soft starter
Product destination	Asynchronous motors
Product specific application	Heavy duty industry and pumps
Device short name	ATS48
Utilisation category	AC-53A
Ue power supply voltage	230...415 V - 15...10 %
Power supply frequency	50...60 Hz - 5...5 %
Motor power kW	630 KW at 400 V connection to the motor delta terminals for standard applications 220 KW at 230 V connection in the motor supply line for standard applications 315 KW at 230 V connection to the motor delta terminals for severe applications 355 KW at 230 V connection to the motor delta terminals for standard applications 355 KW at 400 V connection in the motor supply line for severe applications 400 KW at 400 V connection in the motor supply line for standard applications 500 kW at 400 V connection to the motor delta terminals for severe applications

### Complementary

Device connection	In the motor supply line To the motor delta terminals
Protection type	Phase failure: line Thermal protection: motor Thermal protection: starter
Standards	EN/IEC 60947-4-2
Product certifications	SEPRO[RETURN]C- Tick[RETURN]TCF[RETURN]GOST[RETURN]JUL[RETURN]CCC[RETURN]CSA[RETURN]UL[RETURN]CE
Marking	CE
Discrete input number	5
Discrete input type	PTC, 750 Ohm at 25 °C (Stop, Run, LI3, LI4) logic, <= 8 mA 4300 Ohm
Discrete input logic	Positive logic Stop, Run, LI3, LI4 at State 0: < 5 V and <= 2 mA at State 1: > 11 V, >= 5 mA
Minimum switching current	10 mA at 6 V DC for relay outputs
Discrete output number	2
Discrete output type	(LO1) logic output 0 V common configurable (LO2) logic output 0 V common configurable (R1) relay outputs fault relay NO (R2) relay outputs end of starting relay NO (R3) relay outputs motor powered NO
Analogue output type	Current output AO: 0-20 mA or 4-20 mA, impedance <500 Ohm
Communication port protocol	Modbus
Connector type	1 RJ45
Communication data link	Serial

Physical interface	RS485 multidrop
Transmission rate	4800, 9600 or 19200 bps
Function available	External bypass (optional)
Operating position	Vertical +/- 10 degree
Height	890 mm
Width	770 mm
Depth	315 mm
Net weight	115 kg

## Environment

Electromagnetic compatibility	<p>Conducted and radiated emissions level A conforming to IEC 60947-4-2</p> <p>Damped oscillating waves level 3 conforming to IEC 61000-4-12</p> <p>Electrostatic discharge level 3 conforming to IEC 61000-4-2</p> <p>Immunity to electrical transients level 4 conforming to IEC 61000-4-4</p> <p>Immunity to radiated radio-electrical interference level 3 conforming to IEC 61000-4-3</p> <p>Voltage/current impulse level 3 conforming to IEC 61000-4-5</p>
Relative humidity	0...95 % without condensation or dripping water conforming to EN/IEC 60068-2-3
Ambient air temperature for operation	<p>40...60 °C (with current derating of 2 % per °C)</p> <p>-10...40 °C (without derating)</p>
Ambient air temperature for storage	-25...70 °C
Operating altitude	<p>&lt;= 1000 m without derating</p> <p>&gt; 1000...2000 m with current derating of 2.2 % per additional 100 m</p>

## Packing Units

Unit Type of Package 1	PCE
Number of Units in Package 1	1
Package 1 Height	61.000 cm
Package 1 Width	91.000 cm
Package 1 Length	103.000 cm
Package 1 Weight	123.000 kg

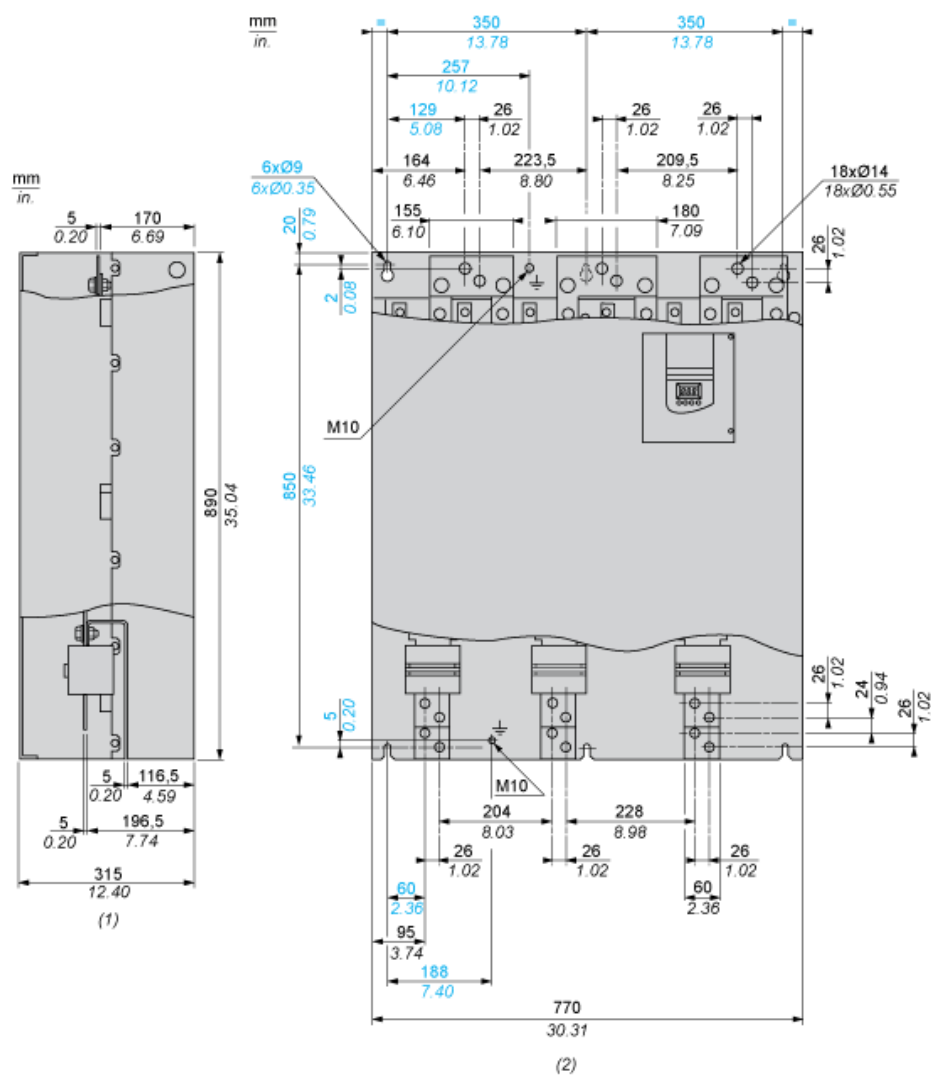
## Offer Sustainability

REACH Regulation	 <a href="#">REACH Declaration</a>
EU RoHS Directive	Pro-active compliance (Product out of EU RoHS legal scope)
Mercury free	Yes
China RoHS Regulation	 <a href="#">China RoHS Declaration</a>
RoHS exemption information	 <a href="#">Yes</a>
WEEE	The product must be disposed on European Union markets following specific waste collection and never end up in rubbish bins

## Contractual warranty

Warranty	18 months
----------	-----------

Dimensions



(1) Right View

(2) Front View

## Clearance

