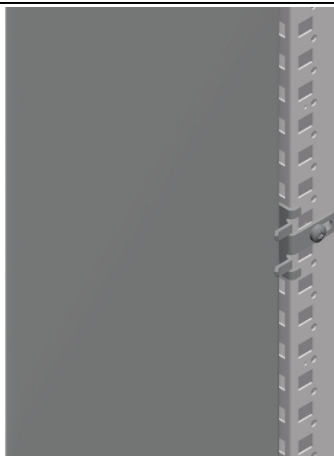


Product data sheet

Characteristics

NSYSMPFB

Spacial SM / Spacial SF intermediate fixing supports in back position



Main

Category	Mounting accessory
Product or component type	Intermediate support
Range compatibility	Spacial Spacial SF Spacial Spacial SM
Application	Multi-purpose
Nominal dimensions of the housing	-
Mounting location	On back side of enclosure
Product destination	For mounting plate
Device composition	1 support Fixing elements
Quantity per set	Set of 10
Material	Steel

Complementary

Surface finish	Zinc coated
Fixing mode	By fixing element
Adjustment	At any height of the mounting plate

Packing Units

Unit Type of Package 1	PCE
Number of Units in Package 1	1
Package 1 Height	3.2 cm
Package 1 Width	5.41 cm
Package 1 Length	5.51 cm
Package 1 Weight	0.06 kg
Unit Type of Package 2	BB1
Number of Units in Package 2	10
Package 2 Height	8 cm
Package 2 Width	16.5 cm
Package 2 Length	12 cm
Package 2 Weight	632 g
Unit Type of Package 3	PAL
Number of Units in Package 3	150
Package 3 Height	20 cm
Package 3 Width	30 cm
Package 3 Length	40 cm
Package 3 Weight	9.48 kg

Offer Sustainability

Sustainable offer status	Green Premium product
REACH Regulation	REACH Declaration
REACH free of SVHC	Yes
EU RoHS Directive	Pro-active compliance (Product out of EU RoHS legal scope) EU RoHS Declaration
Toxic heavy metal free	Yes
Mercury free	Yes
China RoHS Regulation	China RoHS Declaration
RoHS exemption information	Yes
Environmental Disclosure	Product Environmental Profile
Circularity Profile	No need of specific recycling operations

Contractual warranty

Warranty	18 months
----------	-----------