

Product data sheet

Characteristics

XVEL2M7

Ø 70 mm tower light - steady - clear - up to
IP42 - 230..240 V



Main

| | |
|------------------------------------|--|
| Range of product | Harmony XVE Optimum |
| Product or component type | Complete illuminated beacon |
| Beacon or indicator bank unit type | 1 base unit 1 illuminated unit 1 screw fixing cover 1 short fixing base |
| Signalling type | Steady |
| Component name | XVE |
| Light source | Integral LED, clear |
| Bulb type | LED |
| [Us] rated supply voltage | 230...240 V AC |

Complementary

| | |
|--|--|
| Mounting diameter | 70 mm |
| Connections - terminals | Screw clamp terminals, <= 1 x 1.5 mm ² with cable end |
| Marking | CE |
| Short-circuit protection | 0.16 A |
| [Ui] rated insulation voltage | 250 V conforming to IEC 60947-1 |
| Nominal voltage limit | 0.85...1.1 Un conforming to IEC 60947-5-1 |
| Current consumption | < 25 mA |
| [Uimp] rated impulse withstand voltage | 4 kV conforming to IEC 60947-1 |
| Luminance | 800 cd/m ² |
| CAD overall width | 70 mm |
| CAD overall height | 129 mm |
| CAD overall depth | 70 mm |
| Terminals description ISO n°1 | (COM-1)PW (GND)GROUND |
| Net weight | 0.25 kg |

Environment

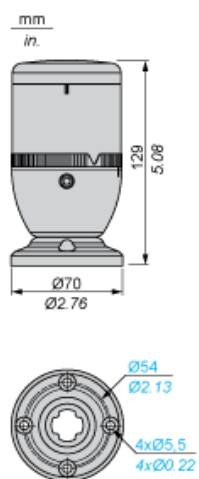
| | |
|---------------------------------------|--|
| Standards | EN/IEC 60947-1 EN/IEC 60947-5-1 |
| Product certifications | CCC[RETURN]UL[RETURN]CSA |
| Ambient air temperature for storage | -40...70 °C |
| Ambient air temperature for operation | -25...55 °C |
| Electrical shock protection class | Class I aluminium tube mounting conforming to IEC 61140 Class I plastic tube mounting conforming to IEC 61140 |
| Protective treatment | TC |
| IP degree of protection | IP40 any position except vertical position conforming to IEC 60529 IP42 vertical position conforming to IEC 60529 |

Contractual warranty

| | |
|----------|-----------|
| Warranty | 18 months |
|----------|-----------|

Illuminated Beacon

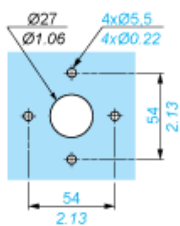
Dimensions



Illuminated Beacon

Panel Cut-out for Mounting Directly on Fixing Base

mm
in.



Illuminated Beacon

Wiring Diagram

