

Product data sheet

Characteristics

XVEL36

BLUE STEADY BEACON 5 W OR LED 240V MAX



Main

Range of product	Harmony XVE Optimum
Product or component type	Complete illuminated beacon
Beacon or indicator bank unit type	1 base unit 1 illuminated unit 1 screw fixing cover 1 short fixing base
Signalling type	Steady
Component name	XVE
Light source	Bulb not included, blue
Bulb type	Incandescent with BA 15d base
[Us] rated supply voltage	<= 240 V AC/DC

Complementary

Mounting diameter	70 mm
Maximum power dissipation in W	5 W
Connections - terminals	Screw clamp terminals, <= 1 x 1.5 mm ² with cable end
Marking	CE
[Ui] rated insulation voltage	250 V conforming to IEC 60947-1
Nominal voltage limit	0.85...1.1 Un conforming to IEC 60947-5-1
[Uimp] rated impulse withstand voltage	4 kV conforming to IEC 60947-1
Luminance	640 cd/m ²
CAD overall width	70 mm
CAD overall height	129 mm
CAD overall depth	70 mm
Terminals description ISO n°1	(GND)GROUND (COM-1)PW
Net weight	0.245 kg

Environment

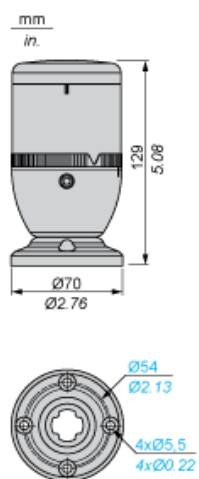
Standards	EN/IEC 60947-5-1 EN/IEC 60947-1
Product certifications	CCC[RETURN]CSA[RETURN]JUL
Ambient air temperature for storage	-40...70 °C
Ambient air temperature for operation	-25...55 °C
Electrical shock protection class	Class I aluminium tube mounting conforming to IEC 61140 Class I plastic tube mounting conforming to IEC 61140
Protective treatment	TC
IP degree of protection	IP40 any position except vertical position conforming to IEC 60529 IP42 vertical position conforming to IEC 60529

Contractual warranty

Warranty	18 months
----------	-----------

Illuminated Beacon

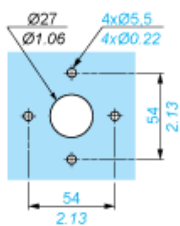
Dimensions



Illuminated Beacon

Panel Cut-out for Mounting Directly on Fixing Base

mm
in.



Illuminated Beacon

Wiring Diagram

