

# Product data sheet

## Characteristics

# ZB4BC38011

pushbutton head for harsh environment - green  
- with marking



### Main

|                               |                       |
|-------------------------------|-----------------------|
| Range of product              | Harmony XB4           |
| Product or component type     | Head for push-button  |
| Device short name             | ZB4                   |
| Bezel material                | Chromium plated metal |
| Head type                     | Standard              |
| Mounting diameter             | 22 mm                 |
| Sale per indivisible quantity | 1                     |

### Complementary

|                                   |   |
|-----------------------------------|---|
| CAD overall width                 | 37 mm   |
| CAD overall height                | 18.5 mm   |
| CAD overall depth                 | 37 mm   |
| Net weight                        | 0.036 kg  |
| Electrical shock protection class | Class I conforming to IEC 61140   |
| Shape of signaling unit head      | Round   |
| Type of operator                  | Spring return   |
| Operator profile                  | Green flush, type H011 (white)  |
| Operator additional information   | Vertical mounting   |
| Mechanical durability             | 10000000 cycles   |
| Vibration resistance              | 5 gn (f= 2...500 Hz) conforming to IEC 60068-2-6  |
| Shock resistance                  | 30 gn (duration = 18 ms) for half sine wave acceleration conforming to IEC 60068-2-27   |
| Main group                        | Harsh environment   |
| Group of product                  | Flush marked type H011  |
| Marking                           | Type H011   |
| Colour of marking                 | White   |
| Electrical composition code       | C1 for <9 contacts using single blocks in front mounting<br>C2 for <9 contacts using single and double blocks in front mounting<br>C11 for <3 contacts using single blocks in front mounting<br>C15 for <1 contacts using single blocks in front mounting |

### Environment

|                                       |   |
|---------------------------------------|---|
| Ambient air temperature for storage   | -40...85 °C   |
| Ambient air temperature for operation | -40...70 °C   |
| IP degree of protection               | IP66 conforming to IEC 60529<br>IP69K<br>IP67<br>IP69 |
| NEMA degree of protection             | NEMA 4 conforming to UL 508<br>NEMA 13<br>NEMA 12     |
| Resistance to high pressure washer    | 90 Pa at 82.5 °C                                      |

|                         |   |
|-------------------------|---|
| IK degree of protection | IK06 conforming to IEC 62262                        |
| Standards               | IEC 60947-5-1<br>UL 508<br>CSA C22.2<br>IEC 60947-1 |
| Product certifications  | UL[RETURN]CSA[RETURN]CE                             |

### Packing Units

|                              |         |
|------------------------------|---------|
| Unit Type of Package 1       | PCE     |
| Number of Units in Package 1 | 1       |
| Package 1 Height             | 3.76 cm |
| Package 1 Width              | 3.7 cm  |
| Package 1 Length             | 3.7 cm  |
| Package 1 Weight             | 34.0 g  |

### Offer Sustainability

|                            |  |
|----------------------------|--|
| Sustainable offer status   | Green Premium product  |
| REACH Regulation           | <a href="#">REACH Declaration</a>  |
| REACH free of SVHC         | Yes  |
| EU RoHS Directive          | Pro-active compliance (Product out of EU RoHS legal scope) <a href="#">EU RoHS Declaration</a> |
| Toxic heavy metal free     | Yes  |
| Mercury free               | Yes  |
| China RoHS Regulation      | <a href="#">China RoHS Declaration</a>   |
| RoHS exemption information | <a href="#">Yes</a>  |
| Environmental Disclosure   | <a href="#">Product Environmental Profile</a>  |
| Circularity Profile        | <a href="#">End Of Life Information</a>  |

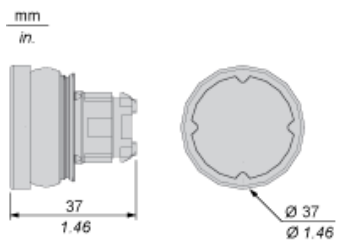
### Contractual warranty

|          |           |
|----------|-----------|
| Warranty | 18 months |
|----------|-----------|

---

Dimensions

---



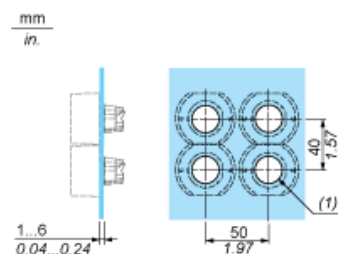
## Installation on Flat Surface

### Without Protective Guard



(1) Ø22.5 mm recommended ( $\text{Ø}22.3_0^{+0.4}$ ) / Ø0.89 in. recommended ( $\text{Ø}0.88_0^{+0.016}$ )

### With Protective Guard



(1) Ø22.5 mm recommended ( $\text{Ø}22.3_0^{+0.4}$ ) / Ø0.89 in. recommended ( $\text{Ø}0.88_0^{+0.016}$ )

---

Marking Type H011

---



---

Electrical Composition Corresponding to Code C1

---



---

Electrical Composition Corresponding to Code C2

---



---

Electrical Composition Corresponding to Codes C9, C11, SF1 and SR1

---

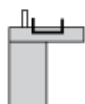


---

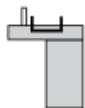
Electrical Composition Corresponding to Code C15

---

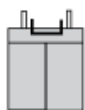
1 N/O



1 N/C



1 N/O + N/C or 1 N/O + N/O or 1 N/C + N/C



## Legend

---

Single contact



Double contact



Light block



Possible location

