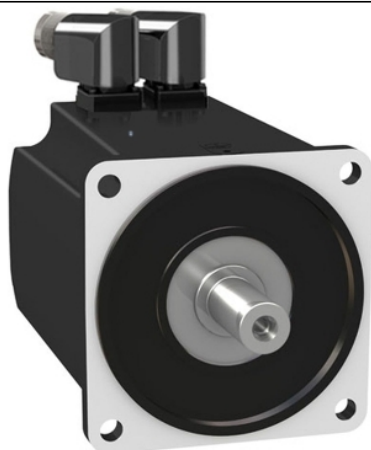


BMH1401P17F2A

servo motor BMH, Lexium 32, 10.3Nm,
4000rpm, keyed shaft, with brake, IP54, 16
multiturn encoder



Main

| | |
|---------------------------|---|
| Device short name | BMH |
| Product or component type | Servo motor |
| Maximum mechanical speed | 4000 rpm |
| Continuous stall torque | 10.3 N.M for LXM32.D30M2 at 10 A, 230 V, single phase 10.3 N.M for LXM32.D30N4 at 10 A, 400 V, three phase 10.3 N.m for LXM32.D30N4 at 10 A, 480 V, three phase |
| Peak stall torque | 30.8 N.M for LXM32.D30M2 at 10 A, 230 V, single phase 30.8 N.M for LXM32.D30N4 at 10 A, 400 V, three phase 30.8 N.m for LXM32.D30N4 at 10 A, 480 V, three phase |
| Nominal output power | 1450 W for LXM32.D30M2 at 10 A, 230 V, single phase 2400 W for LXM32.D30N4 at 10 A, 400 V, three phase 2400 W for LXM32.D30N4 at 10 A, 480 V, three phase |
| Nominal torque | 6.9 N.M for LXM32.D30M2 at 10 A, 230 V, single phase 7.7 N.M for LXM32.D30N4 at 10 A, 400 V, three phase 7.7 N.m for LXM32.D30N4 at 10 A, 480 V, three phase |
| Nominal speed | 2000 rpm for LXM32.D30M2 at 10 A, 230 V, single phase 3000 rpm for LXM32.D30N4 at 10 A, 400 V, three phase 3000 rpm for LXM32.D30N4 at 10 A, 480 V, three phase |
| Product compatibility | LXM32.D30M2 at 230 V single phase LXM32.D30N4 at 400...480 V three phase |
| Shaft end | Keyed |
| IP degree of protection | IP54 standard |
| Speed feedback resolution | 32768 points/turn x 4096 turns |
| Holding brake | With |
| Mounting support | International standard flange |
| Electrical connection | Rotatable right-angled connectors |

Complementary





| | |
|---------------------------|--|
| Range compatibility | Lexium 32 |
| [Us] rated supply voltage | 480 V |
| Network number of phases | Three phase |
| Continuous stall current | 8.58 A |
| Continuous power | 2.85 W |
| Maximum current Irms | 29.8 A for LXM32.D30M2 29.8 A for LXM32.D30N4 |

| | |
|---------------------------------------|--|
| Maximum permanent current | 29.8 A |
| Second shaft | Without second shaft end |
| Shaft diameter | 24 mm |
| Shaft length | 50 mm |
| Key width | 40 mm |
| Feedback type | Multiturn SinCos Hiperface |
| Holding torque | 18 N.m holding brake |
| Motor flange size | 140 mm |
| Number of motor stacks | 1 |
| Torque constant | 1.2 N.m/A at 120 °C |
| Back emf constant | 77.4 V/krpm at 120 °C |
| Number of motor poles | 10 |
| Rotor inertia | 17.96 kg.cm ² |
| Stator resistance | 0.69 Ohm at 20 °C |
| Stator inductance | 6.7 mH at 20 °C |
| Stator electrical time constant | 9.7 ms at 20 °C |
| Maximum radial force Fr | 1930 N at 1000 rpm 1530 N at 2000 rpm 1340 N at 3000 rpm |
| Maximum axial force Fa | 0.2 x Fr |
| Brake pull-in power | 18 W |
| Type of cooling | Natural convection |
| Length | 187 mm |
| Centring collar diameter | 130 mm |
| Centring collar depth | 3.5 mm |
| Number of mounting holes | 4 |
| Mounting holes diameter | 11 mm |
| Circle diameter of the mounting holes | 165 mm |
| Net weight | 10.3 kg |

Packing Units

| | |
|------------------------------|---------|
| Unit Type of Package 1 | PCE |
| Number of Units in Package 1 | 1 |
| Package 1 Height | 26.0 cm |
| Package 1 Width | 20.0 cm |
| Package 1 Length | 60.0 cm |
| Package 1 Weight | 10.6 kg |

Offer Sustainability

| | |
|----------------------------|---|
| Sustainable offer status | Green Premium product |
| REACH Regulation |  REACH Declaration |
| EU RoHS Directive | Pro-active compliance (Product out of EU RoHS legal scope) |
| Mercury free | Yes |
| China RoHS Regulation |  China RoHS Declaration |
| RoHS exemption information |  Yes |
| Environmental Disclosure |  Product Environmental Profile |
| Circularity Profile | No need of specific recycling operations |
| WEEE | The product must be disposed on European Union markets following specific waste collection and never end up in rubbish bins |
| PVC free | Yes |

Contractual warranty

| | |
|----------|-----------|
| Warranty | 18 months |
|----------|-----------|