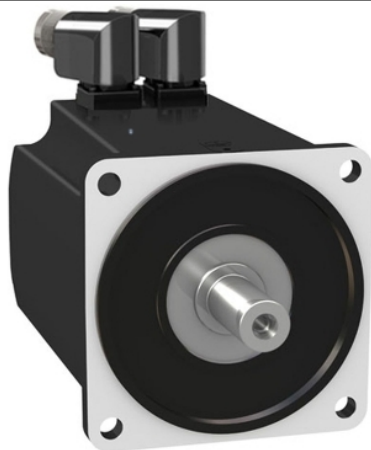


BMH1403P16A2A

servo motor BMH, Lexium 32, 24Nm, 4000rpm,
keyed shaft, without brake, IP54, 16bit
encoder, 3 phases



Main

Device short name	BMH
Product or component type	Servo motor
Maximum mechanical speed	4000 rpm
Continuous stall torque	24 N.M for LXM32.D72N4 at 24 A, 400 V, three phase 24 N.m for LXM32.D72N4 at 24 A, 480 V, three phase
Peak stall torque	71.8 N.M for LXM32.D72N4 at 24 A, 400 V, three phase 71.8 N.m for LXM32.D72N4 at 24 A, 480 V, three phase
Nominal output power	4700 W for LXM32.D72N4 at 24 A, 400 V, three phase 4700 W for LXM32.D72N4 at 24 A, 480 V, three phase
Nominal torque	13.92 N.M for LXM32.D72N4 at 24 A, 400 V, three phase 13.92 N.m for LXM32.D72N4 at 24 A, 480 V, three phase
Nominal speed	3000 rpm for LXM32.D72N4 at 24 A, 400 V, three phase 3000 rpm for LXM32.D72N4 at 24 A, 480 V, three phase
Product compatibility	LXM32.D72N4 at 400...480 V three phase
Shaft end	Keyed
IP degree of protection	IP54 standard
Speed feedback resolution	32768 points/turn
Holding brake	Without
Mounting support	International standard flange
Electrical connection	Rotatable right-angled connectors

Complementary

Range compatibility	Lexium 32
[Us] rated supply voltage	480 V
Network number of phases	Three phase
Continuous stall current	18 A
Continuous power	4.8 W
Maximum current Irms	62.3 A for LXM32.D72N4
Maximum permanent current	62.3 A
Second shaft	Without second shaft end
Shaft diameter	24 mm
Shaft length	50 mm
Key width	40 mm
Feedback type	Single turn SinCos Hiperface
Motor flange size	140 mm
Number of motor stacks	3
Torque constant	1.34 N.m/A at 120 °C

Back emf constant	85.9 V/krpm at 120 °C
Number of motor poles	10
Rotor inertia	47.5 kg.cm ²
Stator resistance	0.22 Ohm at 20 °C
Stator inductance	3 mH at 20 °C
Stator electrical time constant	13.6 ms at 20 °C
Maximum radial force Fr	2420 N at 1000 rpm 1920 N at 2000 rpm 1680 N at 3000 rpm
Maximum axial force Fa	0.2 x Fr
Type of cooling	Natural convection
Length	232 mm
Centring collar diameter	130 mm
Centring collar depth	3.5 mm
Number of mounting holes	4
Mounting holes diameter	11 mm
Circle diameter of the mounting holes	165 mm
Net weight	16 kg

Packing Units

Unit Type of Package 1	PCE
Number of Units in Package 1	1
Package 1 Height	20.500 cm
Package 1 Width	27.000 cm
Package 1 Length	60.000 cm
Package 1 Weight	17.576 kg
Unit Type of Package 2	P06
Number of Units in Package 2	12
Package 2 Height	105.000 cm
Package 2 Width	60.000 cm
Package 2 Length	80.000 cm
Package 2 Weight	220.000 kg

Offer Sustainability

Sustainable offer status	Green Premium product
REACH Regulation	 REACH Declaration
EU RoHS Directive	Pro-active compliance (Product out of EU RoHS legal scope)
Mercury free	Yes
China RoHS Regulation	 China RoHS Declaration
RoHS exemption information	 Yes
Environmental Disclosure	 Product Environmental Profile
Circularity Profile	No need of specific recycling operations
WEEE	The product must be disposed on European Union markets following specific waste collection and never end up in rubbish bins
PVC free	Yes

Contractual warranty

Warranty	18 months
----------	-----------