



Main

| | |
|---------------------------|--|
| Range of product | Modicon STB distributed I/O solution |
| Product or component type | Basic analog input kit |
| Kit composition | STBXTS1100, 6-terminal screw type connector STBXBA1000 base STBXTS2100, 6-terminal spring clamp connector STBACI1225 module |
| Analogue input type | Current 4...20 mA |
| Analogue input number | 2 |
| Analogue input resolution | 10 bits |
| Type of filter | Single low pass input filter 25 Hz |

Complementary

| | |
|--|---|
| Absolute maximum input | 25 mA/50 V DC |
| Response time | 5 ms |
| Cold swapping | Yes |
| Hot swapping fallback | No for basic NIMs |
| Data format | EN 61131-2 IEC 61131-2 |
| Update time | 10 ms |
| Integral linearity | +/- 0.2 %FS |
| Differential linearity | Monotonic |
| Input impedance | <= 300 Ohm |
| Maximum supply current for sensors | 100 mA per input channels |
| Absolute accuracy error | +/- 0.5 % of full scale 25 °C |
| Temperature drift | +/-0.01 %/°C |
| Insulation between channels and logic bus | 1500 V for 1 minute |
| Insulation between channels and sensor bus | 30 V |
| Addressing requirement | 2 input words |
| Product compatibility | Mounting base STBXBA1000 Power distribution module STBPDT3100/3105 |
| [Us] rated supply voltage | 24 V DC |
| Supply | Power distribution module |
| Current consumption | 30 mA at 5 V DC for logic bus |
| Marking | CE |
| Overvoltage category | II |
| Status LED | 1 LED (green) module status (RDY) |
| Depth | 70 mm |
| Height | 13.9 mm |
| Width | 128.3 mm |

Environment

| | |
|---------------------------------------|---|
| Product certifications | C-Tick[RETURN]UL[RETURN]CSA[RETURN]FM Class 1 Division 2[RETURN]ATEX Cat 3G |
| Pollution degree | 2 conforming to IEC 60664-1 |
| Operating altitude | <= 2000 m |
| IP degree of protection | IP20 conforming to IEC 61131-2 class 1 |
| Ambient air temperature for operation | 0...60 °C |

| | |
|---------------------------------------|---|
| Ambient air temperature for operation | 32...140 °F without derating |
| Ambient air temperature for storage | -40...85 °C without derating |
| Ambient air temperature for storage | -40...185 °F without derating |
| Relative humidity | 95 % at 60 °C without condensation |
| Vibration resistance | +/-0.35 mm at 10...58 Hz 3 gn at 58...150 Hz on 35 x 7.5 mm symmetrical DIN rail 5 gn at 58...150 Hz on 35 x 15 mm symmetrical DIN rail |
| Shock resistance | 30 gn for 11 ms conforming to IEC 88 reference 2-27 |

Packing Units

| | |
|------------------------------|-----------|
| Unit Type of Package 1 | PCE |
| Number of Units in Package 1 | 1 |
| Package 1 Height | 2.79 cm |
| Package 1 Width | 8.13 cm |
| Package 1 Length | 13.21 cm |
| Package 1 Weight | 140 g |
| Unit Type of Package 2 | S02 |
| Number of Units in Package 2 | 28 |
| Package 2 Height | 15 cm |
| Package 2 Width | 30 cm |
| Package 2 Length | 40 cm |
| Package 2 Weight | 4.262 kg |
| Unit Type of Package 3 | P06 |
| Number of Units in Package 3 | 448 |
| Package 3 Height | 75.0 cm |
| Package 3 Width | 40.0 cm |
| Package 3 Length | 80.0 cm |
| Package 3 Weight | 85.928 kg |

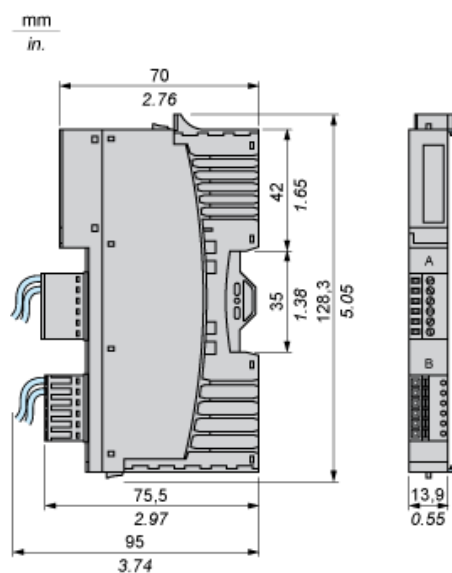
Offer Sustainability

| | |
|----------------------------|---|
| REACH Regulation |  REACH Declaration |
| EU RoHS Directive | Pro-active compliance (Product out of EU RoHS legal scope) |
| Mercury free | Yes |
| China RoHS Regulation |  China RoHS Declaration |
| RoHS exemption information |  Yes |
| WEEE | The product must be disposed on European Union markets following specific waste collection and never end up in rubbish bins |

Contractual warranty

| | |
|----------|-----------|
| Warranty | 18 months |
|----------|-----------|

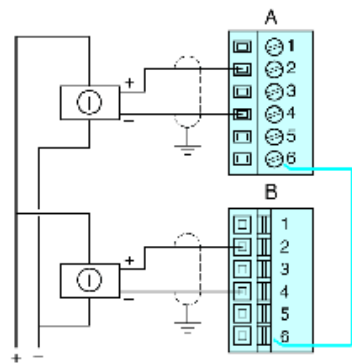
Dimensions



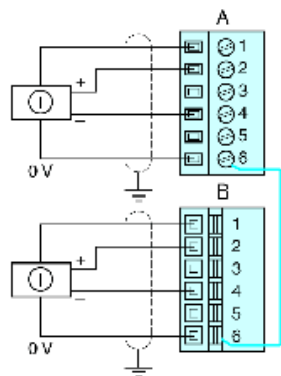
Wiring Diagrams

Examples

2 isolated analog sensors, external 24 VDC power supply



2 non-isolated analog sensors, 24 VDC supplied by the PDM



| Pin | Top Connections | Bottom Connections |
|-----|---|---|
| 1 | +24 VDC from field power bus for field device accessories | +24 VDC from field power bus for field device accessories |
| 2 | input from sensor 1 | input from sensor 2 |
| 3 | no connection | no connection |
| 4 | analog input return | analog input return |
| 5 | no connection | no connection |
| 6 | field power return (to the module) | field power return (to the module) |