

XS8C2A4MBU20

Inductive proximity sensors XS, inductive sensor XS8 40x40x70, PBT, Sn40 mm, 24...240VAC/DC, 1/2"



Main

| | |
|------------------------------------|---|
| Range of product | Telemecanique Inductive proximity sensors XS |
| Series name | General purpose |
| Sensor type | Inductive proximity sensor |
| Device application | - |
| Sensor name | XS8 |
| Sensor design | Form 40 x 40 x 70 |
| Size | 70 mm |
| Body type | Fixed |
| Detector flush mounting acceptance | Non flush mountable |
| Material | Plastic |
| Enclosure material | PBT |
| Type of output signal | Discrete |
| Wiring technique | 2-wire |
| [Sn] nominal sensing distance | 40 mm |
| Discrete output function | 1 NC |
| Output circuit type | AC/DC |
| Electrical connection | Male connector 1/2"20 UNF, 3 pins |
| [Us] rated supply voltage | 24...240 V AC 50/60 Hz 24...240 V DC |
| Switching capacity in mA | 5...200 mA DC 5...300 mA AC |
| IP degree of protection | IP67 conforming to IEC 60529 IP65 conforming to IEC 60529 IP69K conforming to DIN 40050 |

Complementary

| | |
|--------------------------|--|
| Detection face | 5 positions turret head |
| Front material | PBT |
| Operating zone | 0...32 mm |
| Differential travel | 3...15% of Sr |
| Repeat accuracy | <= 3% of Sr |
| Status LED | Supply on: 1 LED (green) Output state: 1 LED (yellow) |
| Supply voltage limits | 20...264 V AC/DC |
| Maximum residual current | 1.5 mA open state 120 V 0.6 mA open state 24 V |
| Switching frequency | <= 25 Hz AC <= 50 Hz DC |
| Maximum voltage drop | <5.5 V (closed) |
| Maximum delay first up | 7.5 ms |
| Maximum delay response | 1.4 ms |
| Maximum delay recovery | 2.5 ms |
| Marking | CE |
| Height | 40 mm |
| Length | 40 mm |

| | |
|------------|----------|
| Width | 70 mm |
| Net weight | 0.149 kg |



Environment

| | |
|---------------------------------------|---|
| Product certifications | UL[RETURN]CCC[RETURN]CSA |
| Ambient air temperature for operation | -25...70 °C |
| Ambient air temperature for storage | -40...85 °C |
| Vibration resistance | 25 gn amplitude = +/- 2 mm (f = 10...55 Hz) conforming to IEC 60068-2-6 |
| Shock resistance | 50 gn for 11 ms conforming to EN 60068-2-27 |

Packing Units

| | |
|------------------------------|-----|
| Unit Type of Package 1 | PCE |
| Number of Units in Package 1 | 1 |

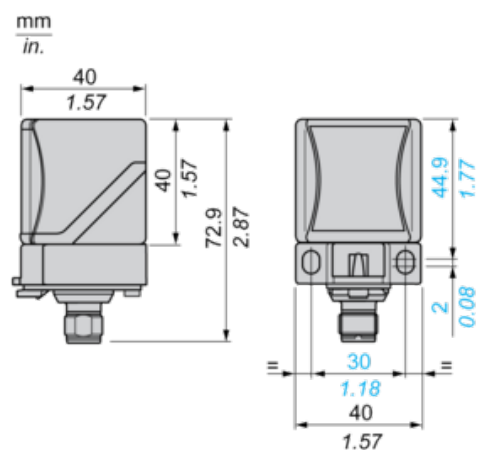
Offer Sustainability

| | |
|----------------------------|--|
| Sustainable offer status | Green Premium product |
| EU RoHS Directive | Pro-active compliance (Product out of EU RoHS legal scope)  EU RoHS Declaration |
| Mercury free | Yes |
| RoHS exemption information |  Yes |
| California proposition 65 | WARNING: This product can expose you to chemicals including: Diisononyl phthalate (DINP), which is known to the State of California to cause cancer, and Diisodecyl phthalate (DIDP), which is known to the State of California to cause birth defects or other reproductive harm. For more information go to www.P65Warnings.ca.gov |

Contractual warranty

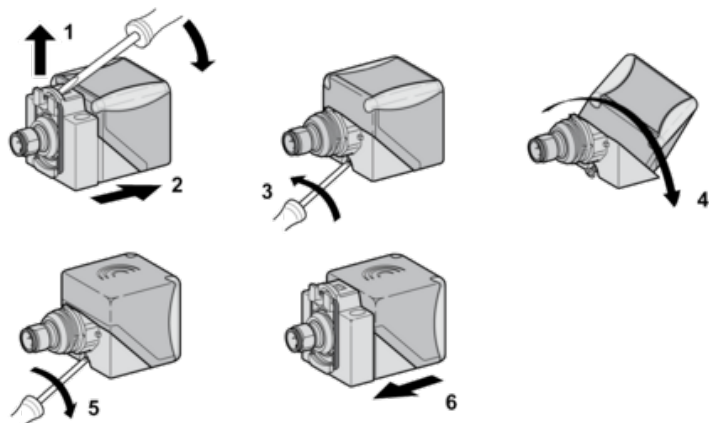
| | |
|----------|-----------|
| Warranty | 18 months |
|----------|-----------|

Dimensions



Mounting

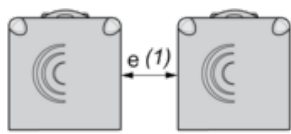
Head Positions



Setting-up Precautions

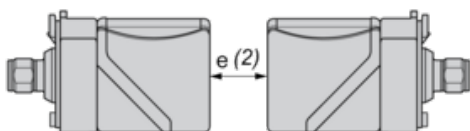
Minimum Mounting Distances (mm)

Side by Side



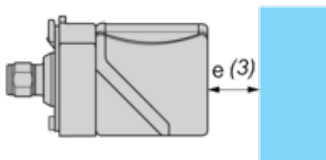
$$e(1) \geq 160$$

Face to Face



$$e(2) \geq 320$$

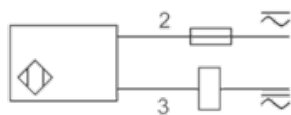
Facing a Metal Object



$$e(3) \geq 120$$

Wiring Schemes

2-Wire NC Output



1/2"-20UNF

