

## XSZB112

Inductive proximity sensors XS, accessory for sensor,  $\tilde{A}$  12 mm, fixing clamp with indexing, plastic



### Main

Range of Product	Telemecanique Inductive proximity sensors XS
Accessory / separate part category	Mounting and fixing accessories
Accessory / separate part type	Fixing clamp
Accessory / separate part designation	Fixing clamp
Accessory / separate part destination	Cylindrical M12 sensor
Material	Plastic

### Complementary

Product Compatibility	XT cylindrical M12 XS cylindrical M12
Net Weight	0.01 lb(US) (0.006 kg)

### Ordering and shipping details

Category	US10DS222499
Discount Schedule	0DS2
GTIN	3389110914030
Returnability	Yes
Country of origin	FR

### Packing Units

Unit Type of Package 1	PCE
Number of Units in Package 1	1
Package 1 Height	0.79 in (2.000 cm)
Package 1 Width	1.77 in (4.500 cm)
Package 1 Length	1.18 in (3.000 cm)
Package 1 Weight	0.28 oz (8.000 g)
Unit Type of Package 2	S01
Number of Units in Package 2	100
Package 2 Height	5.91 in (15 cm)
Package 2 Width	5.91 in (15 cm)
Package 2 Length	15.75 in (40 cm)
Package 2 Weight	2.30 lb(US) (1.045 kg)

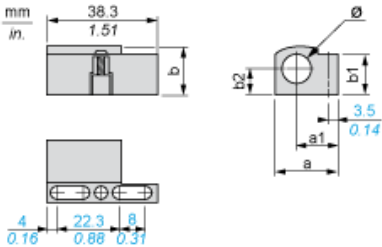
### Offer Sustainability

Sustainable offer status	Green Premium product
California proposition 65	WARNING: This product can expose you to chemicals including: Diisononyl phthalate (DINP), which is known to the State of California to cause cancer, and Di-isodecyl phthalate (DIDP), which is known to the State of California to cause birth defects or other reproductive harm. For more information go to <a href="http://www.P65Warnings.ca.gov">www.P65Warnings.ca.gov</a>
Circularity Profile	<a href="#">End of Life Information</a>
For all Reach Rohs enquiries contact us at	<a href="mailto:sustainability@tesensors.com">sustainability@tesensors.com</a>

## Contractual warranty

Warranty	18 months
----------	-----------

Dimensions



Dimensions in mm

a	a1	b	b1	b2	Ø
21.9	14.5	16	15.5	8.5	12

Dimensions in in.

a	a1	b	b1	b2	Ø
0.86	0.57	0.63	0.61	0.33	0.47